

Ducting - Rectangular

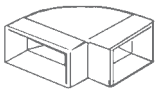
Flat Channel Ducting



Cat. No.	Product Type	External Dimensions (mm)			Resistance (Pa) at flow rate								
		H	W	D	8 l/s	13 l/s	21 l/s	29 l/s	37 l/s	45 l/s	53 l/s	61 l/s	
40100	110 x 54mm - L1000mm	54	110	1000	0.8	1.6	3.5	6.0	9.2	13.1	17.1	21.1	
40150	110 x 54mm - L1500mm	54	110	1500	1.2	2.4	5.3	9.1	13.9	19.8	25.9	32	
44020	110 x 54mm - L2000mm	54	110	1500	-	-	-	-	-	-	-	-	
58100	150 x 70mm - L1000mm	70	150	1000	-	-	-	-	-	-	-	-	
58150	150 x 70mm - L1500mm	70	150	1500	-	-	-	-	-	-	-	-	
58030	150 x 70mm - L300mm	70	150	300	-	-	-	-	-	-	-	-	
58040	150 x 70mm - L400mm	70	150	400	-	-	-	-	-	-	-	-	
55100	204 x 60mm - L1000mm	60	204	1000	<1	<1	<1	1.5	2.2	3.0	3.9	5.1	
55150	204 x 60mm - L1500mm	60	204	1500	<1	<1	1.3	2.2	3.3	4.5	5.9	7.8	
55020	204 x 60mm - L2000mm	60	204	1500	-	-	-	-	-	-	-	-	
Cat. No.	Product Type	H	W	D	60 l/s			120 l/s			180 l/s		
60910	220 x 90mm - L1000mm	90	220	1000	0.9			3.2			6.7		
60915	220 x 90mm - L1500mm	90	220	1500	1.4			4.9			10.2		
60902	220 x 90mm - L2000mm	90	220										
1501	225 x 25mm - L1000mm	25	225	1000	-			-			-		
1503	225 x 25mm - L1500mm	25	225	1500	-			-			-		
1502	225 x 25mm - L2000mm	25	225	2000	-			-			-		
1500	225 x 25mm - L2400mm	25	225	2400	-			-			-		
1509	300 x 25mm - L1000mm	25	300	1000	-			-			-		
1508	300 x 25mm - L1500mm	25	300	1500	-			-			-		
1510	300 x 25mm - L2000mm	25	300	2000	-			-			-		
1515	300 x 25mm - L2400mm	25	300	2400	-			-			-		

Horizontal 90° Bend

Rectangular Horizontal Bend with Female Fittings Suitable for above Kitchen cupboards



Cat. No.	Product Type	External Dimensions (mm)			Resistance (Pa) at flow rate								
		H	W	D	8 l/s	13 l/s	21 l/s	29 l/s	37 l/s	45 l/s	53 l/s	61 l/s	
40500	110x54mm	60	152	152	2.3	9.9	21	38	64	93	124	162	
58500	150 x 70mm	-	-	-	-	-	-	-	-	-	-	-	
55500	204 x 60mm	65	260	260	<1	1.7	4.1	8.4	13	18	25	34	
Cat. No.	Product Type	H	W	D	60 l/s			120 l/s			180 l/s		
60950	220 x 90mm	95	250	250	9			36			80		
1540	225 x 25mm	-	-	-	-			-			-		
1550	300 x 25mm	-	-	-	-			-			-		

Horizontal 45° Bend

Rectangular Horizontal Bend with Female Fittings Suitable for above Kitchen cupboards



Cat. No.	Product Type	External Dimensions (mm)			Resistance (Pa) at flow rate								
		H	W	D	8 l/s	13 l/s	21 l/s	29 l/s	37 l/s	45 l/s	53 l/s	61 l/s	
40450	110 x 54mm	-	-	-	-	-	-	-	-	-	-	-	
55810	204 x 60mm	65	240	260	0.2	0.7	1.2	2.1	3.8	6.1	9.2	13	
Cat. No.	Product Type	H	W	D	60 l/s			120 l/s			180 l/s		
60953	220 x 90mm	95	240	200	5			20			46		
1560	225 x 25mm	-	-	-	-			-			-		
1570	300 x 25mm	-	-	-	-			-			-		

Adjustable Horizontal Bend

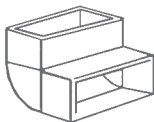
For connecting to Flat Channel Ducting



Cat. No.	Product Type	External Dimensions (mm)			Resistance (Pa) at flow rate							
		H	W	D	8 l/s	13 l/s	21 l/s	29 l/s	37 l/s	45 l/s	53 l/s	61 l/s
54500	204 x 60mm	-	-	-	-	-	-	-	-	-	-	-

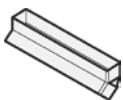
Vertical 90° Bend

90° Rectangular Vertical Bend with Female Fittings suitable for above Kitchen cupboards



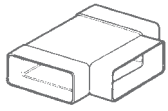
Cat. No.	Product Type	External Dimensions (mm)			Resistance (Pa) at flow rate								
		H	W	D	8 l/s	13 l/s	21 l/s	29 l/s	37 l/s	45 l/s	53 l/s	61 l/s	
40600	110 x 54mm	95	115	95	3.3	15.5	36	61	96	138	190	253	
58600	150 x 70mm	-	-	-	-	-	-	-	-	-	-	-	
55600	204 x 60mm	115	210	115	1.1	2.5	5.2	9.8	16.1	24	33.6	45	
Cat. No.	Product Type	H	W	D	60 l/s			120 l/s			180 l/s		
60960	220 x 90mm	117	224	120	7			28			66		
1600	225 x 25mm	-	-	-	-			-			-		
1610	300 x 25mm	-	-	-	-			-			-		

45° Vertical Bend



Cat. No.	Product Type	External Dimensions (mm)			Resistance (Pa) at flow rate								
		H	W	D	8 l/s	13 l/s	21 l/s	29 l/s	37 l/s	45 l/s	53 l/s	61 l/s	
40045	110 x 54mm	-	-	-	-	-	-	-	-	-	-	-	
55645	204 x 60mm	-	-	-	-	-	-	-	-	-	-	-	
Cat. No.	Product Type	H	W	D	60 l/s			120 l/s			180 l/s		
60963	220 x 90mm	110	225	115	6			27			65		
1670	225 x 25mm	-	-	-	-			-			-		
1690	300 x 25mm	-	-	-	-			-			-		

Ducting - Rectangular



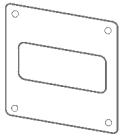
Horizontal T-Piece - Adaptor to Connect Flat Channel Ducting

Cat. No.	Product Type	Size	Resistance (Pa) at flow rate								
			8 l/s	13 l/s	21 l/s	29 l/s	37 l/s	45 l/s	53 l/s	61 l/s	
40080	110 x 54mm	110 x 54mm	vary on installation								
55582	204 x 60mm	204 x 60mm	vary on installation								
60955	220 x 90mm	220 x 90mm	vary on installation								



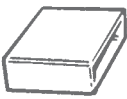
Cross Over Duct Connector

Cat. No.	Product Type	External Dimensions (mm)			Resistance (Pa) at flow rate							
		H	W	D	8 l/s	13 l/s	21 l/s	29 l/s	37 l/s	45 l/s	53 l/s	61 l/s
442273	30' Drop Down Connection	120	220	210	0.2	0.5	1.7	3.6	6.0	9.1	12.4	16.6



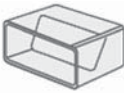
Rectangular Wall Plate

Cat. No.	Product Type	External Dimensions (mm)			Resistance (Pa) at flow rate							
		H	W	D	8 l/s	13 l/s	21 l/s	29 l/s	37 l/s	45 l/s	53 l/s	61 l/s
41150	154 x 154mm	154	154	-	n/a	n/a	n/a	n/a	n/a	n/a	n/a	n/a
58650	172 x 172mm	172	172	-	n/a	n/a	n/a	n/a	n/a	n/a	n/a	n/a
51150	119 x 264mm	119	264	-	n/a	n/a	n/a	n/a	n/a	n/a	n/a	n/a



Flat Channel Connector

Cat. No.	Product Type	External Dimensions (mm)			Resistance (Pa) at flow rate							
		H	W	D	8 l/s	13 l/s	21 l/s	29 l/s	37 l/s	45 l/s	53 l/s	61 l/s
40200	110 x 54mm	54	114	100	<1	<1	1.1	1.4	2.2	3.4	4.8	6.4
58200	150 x 70mm	-	-	-	-	-	-	-	-	-	-	-
55200	204 x 60mm	64	212	100	<1	<1	<1	<1	<1	<1	1.2	1.5
1520	225 x 25mm	-	-	-	-	-	-	-	-	-	-	-
1530	300 x 25mm	-	-	-	-	-	-	-	-	-	-	-
Cat. No.	Product Type	H	W	D	60 l/s		120 l/s			180 l/s		
60920	220 x 90mm	95	224	52	<1		<1			<1		



Flat Channel Connector with Internal Damper

Cat. No.	Product Type	External Dimensions (mm)			Resistance (Pa) at flow rate							
		H	W	D	8 l/s	13 l/s	21 l/s	29 l/s	37 l/s	45 l/s	53 l/s	61 l/s
40270	110 x 54mm - with Damper	60	115	75	16	17.5	19.5	22	25.5	30.5	36	42



Rigid Duct Attenuator

Cat. No.	Product Type	Size	Resistance (Pa) at flow rate									
			8 l/s	13 l/s	21 l/s	29 l/s	37 l/s	45 l/s	53 l/s	61 l/s		
SL55105	0.6m Length	204 x 60mm	<1	<1	2.3	4.2	-	-	-	-	-	12.2
SL55100	1.0m Length	204 x 60mm	<1	<1	2.2	4.1	-	-	-	-	-	15



Insulated Rectangular Duct

Cat. No.	Product Type	Size	Resistance (Pa) at flow rate									
			8 l/s	13 l/s	21 l/s	29 l/s	37 l/s	45 l/s	53 l/s	61 l/s		
IJRP55150	1.5m Length	204 x 60mm	<1	<1	1.3	2.2	3.3	4.5	5.9	7.8	-	-
IJRP55020	2.0m Length	204 x 60mm	-	-	-	-	-	-	-	-	-	-
IJRP60915	1.5m Length	220 x 90mm	-	-	-	-	-	-	-	-	-	-
IJ204-1.5	1.5m Length Jacket	204 x 60mm	-	-	-	-	-	-	-	-	-	-
IJ204-2	2.0m Length Jacket	204 x 60mm	-	-	-	-	-	-	-	-	-	-
IJ220-1.5	1.5m Length Jacket	220 x 90mm	-	-	-	-	-	-	-	-	-	-



Insulated Vertical Bend

Cat. No.	Product Type	Size	Resistance (Pa) at flow rate									
			8 l/s	13 l/s	21 l/s	29 l/s	37 l/s	45 l/s	53 l/s	61 l/s		
IJBV55645	Vertical 45° Bend	204 x 60mm	0.1	0.5	1.3	2.5	4.4	6.9	10	13.3	-	-
IJBV55600	Vertical 90° Bend	204 x 60mm	1.1	2.5	5.2	9.8	16.1	24	33.6	45	-	-
IJV204-45	Vertical 45° Bend Jacket	204 x 60mm	-	-	-	-	-	-	-	-	-	-
IJV204-90	Vertical 90° Bend Jacket	204 x 60mm	-	-	-	-	-	-	-	-	-	-



Insulated Horizontal Bend

Cat. No.	Product Type	Size	Resistance (Pa) at flow rate									
			8 l/s	13 l/s	21 l/s	29 l/s	37 l/s	45 l/s	53 l/s	61 l/s		
IJBH55810	Horizontal 45° Bend	204 x 60mm	0.2	0.7	1.2	2.1	3.8	6.1	9.2	13	-	-
IJBH55500	Horizontal 90° Bend	204 x 60mm	0.7	1.7	4.1	8.4	13	18	25	34	-	-
Cat. No.	Product Type	Size	60 l/s			120 l/s			180 l/s			
IJBH60950	Horizontal 90° Bend	220 x 90mm	9			36			80			
IJ204-45	45° Bend Jacket	204 x 60mm	-									
IJ204-90	90° Bend Jacket	204 x 60mm	-									
IJ220-90	90° Bend Jacket	220 x 90mm	-									



Insulated T-Piece Bend

Cat. No.	Product Type	Size	Resistance (Pa) at flow rate									
			8 l/s	13 l/s	21 l/s	29 l/s	37 l/s	45 l/s	53 l/s	61 l/s		
IJTH55582	T-Piece	204 x 60mm	vary on installation									
IJH204	T-Piece Jacket	204 x 60mm	-	-	-	-	-	-	-	-	-	-